



Clean benches

**Engineered to optimize  
efficiency and safety**

**Heraguard ECO Clean Bench**

# Designed for safety and functionality

## Sample protection from contamination

Thermo Scientific™ Heraguard™ ECO clean benches are ideal for laboratory applications where sample protection is required. Due to DC motors, the clean benches use less energy to operate than products with traditional AC motors, so there is less heat emitted into the lab.\* They are available in four sizes: 900mm, 1200mm, 1500mm, or 1800mm (1800mm size with optional extra height).

### Heraguard ECO clean benches enable:

- ISO class 5 minimum conditions achieved in the work area
- EU GMP Grade A work environment achieved in the work area
- Sample protection
- Ease of use

### Choose the configuration that meets your laboratory needs:

- Further enhance the convenience by adding hanging bars inside the work area. The included Thermo Scientific™ SmartPort™ convenience provides clean and safe routing for vacuum tubing and cables through the side of the clean bench to help improve organisation and work efficiency.
- An optional UV light can be fitted into the top of the work space to disinfect the worktop.
- Protect the user against the dry purified air with a wind screen that is folded under the light housing and flipped down for use.
- An optional stainless steel work surface can be added to improve durability for demanding applications.



\* Based on data from internal testing and The University of Michigan Field Study, published in American Biotechnology Laboratory.

# At a glance

## Features and options

### UV disinfection (optional)

A UV light can be fitted into the top of the work space to disinfect the worktop.

### Transparent hinged wind screen (optional)

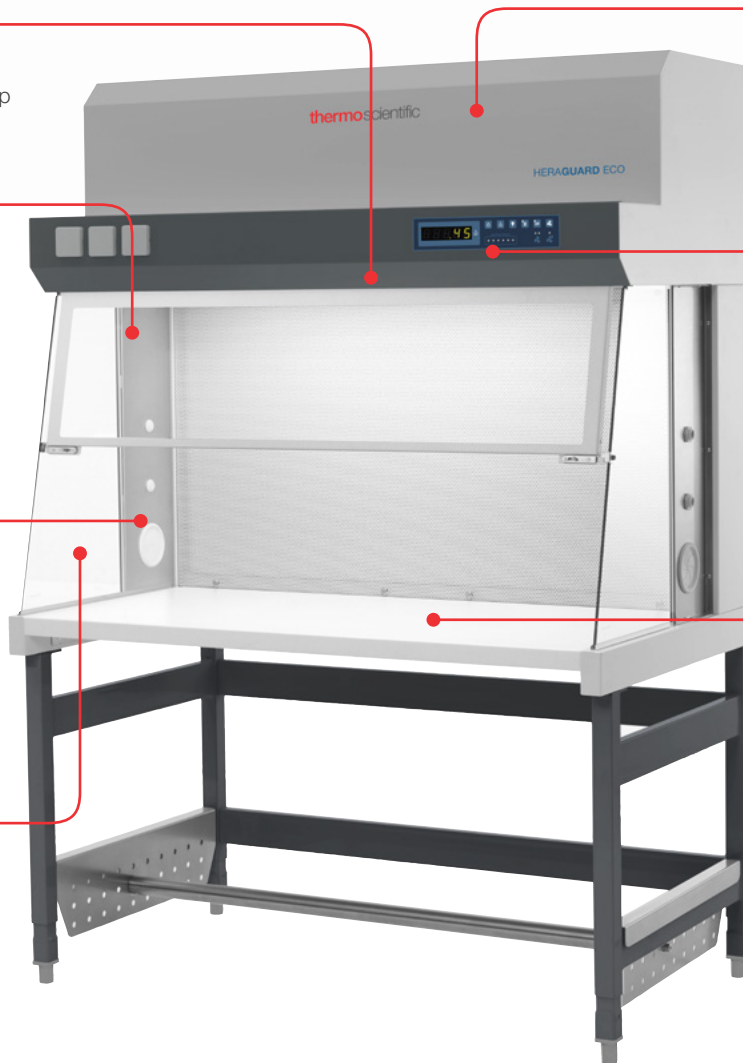
Helps protect the user against the dry purified air flow. The wind screen is folded under the light housing and can be flipped down for use.

### SmartPort convenience

Clean and safe routing for vacuum tubing and cables through the side of the clean bench improves organisation and work efficiency.

### Modular side windows

The side windows are made of single pane safety glass with an access port for tubing or a media tap. Optionally, a lacquered sheet steel plate with three holes can be used.



### Prefilter

The prefilter on the intake side can be changed by hand, without the need for tools. Prefilter exchange is made economical and easy.

### Intuitive control panel

Displays safety and performance data.

### Choice of work tops

Standard melamine work tops or optional stainless steel tops are available for different applications and individual work space designs.

# Horizontal laminar flow technology

## How it works

Clean benches provide a clean (aseptic) space to work with a product or specimen without contaminating it with particles such as micro-organisms. They protect the product, they do not protect the user or the environment.

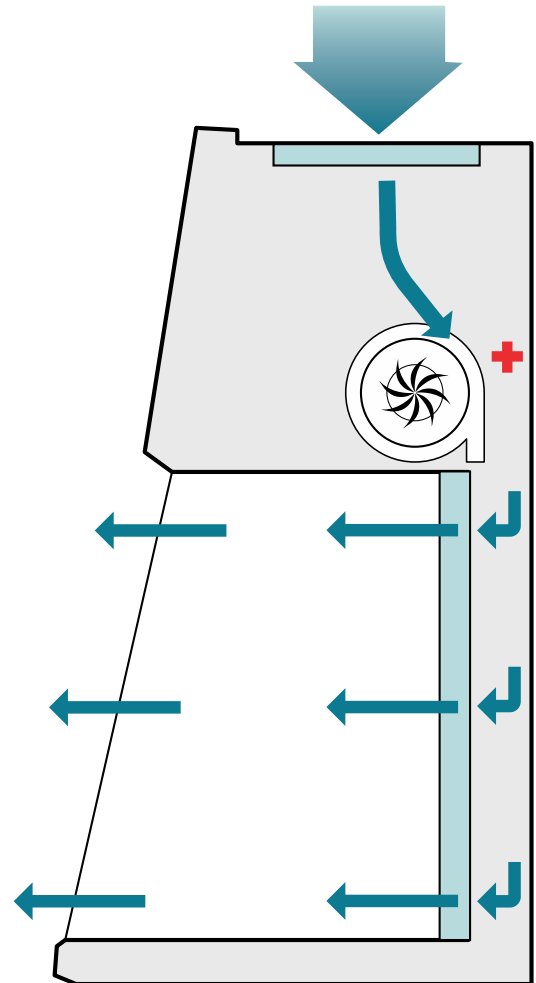
### Horizontal laminar flow

When using smaller equipment and consumables within the cabinet, the horizontal laminar flow is ideal as it creates less turbulence at work space level compared to the vertical laminar flow system.

Air is pulled in from the top and passes through a pre-filter, before it is then pushed through the HEPA filter. A horizontal laminar flow is produced within the work area. The laminar flow (=uni-directional flow) helps protect the product from contamination, from the worker and also contamination from the environment. The work area becomes a (positive) particle free aseptic clean zone which is being continually bathed in clean air. The device is GMP compliant and the air cleanliness inside the work area equals at the very minimum ISO Class 5. This classification relates to the international cleanroom standard ISO 14644-1.

The horizontal laminar flow clean bench provides:

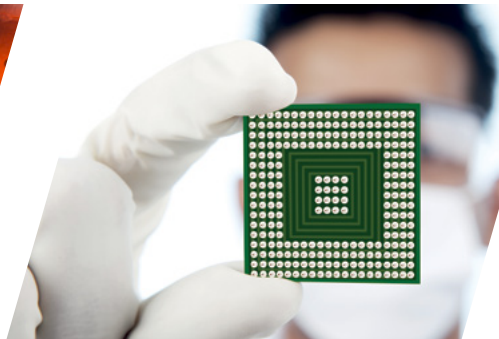
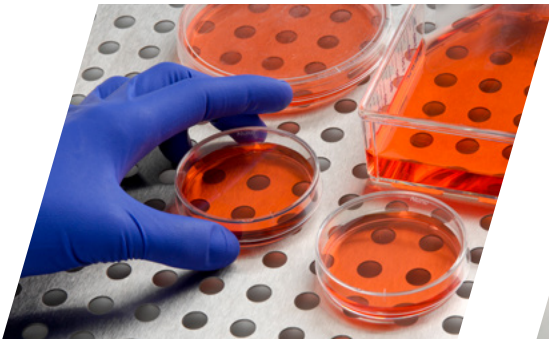
- Product protection
- Particle free work area (EU GMP Grade 'A')
- Positive air pressure
- Air velocity 0.45m/s (models with standard height) and 0.40m/s (model with extra height) uni-directional flow
- GMP compliant
- Air cleanliness –ISO class 5 minimum (ISO 14644-1 cleanroom standard)



# Application

## Where our clean benches are typically used

- Hospitals (Pharmacy) — drug dispensing, IV mixture prep, media prep, drug compounding
- Cleanrooms
- Hospitals (microbiology dept.) — Tissue Culture (non-biological)
- IVF departments
- Pharmaceutical research
- Cleanrooms — GMP suites
- Pharmaceutical microbiology
- Sterile packaging and filling
- Micro-electronics assembly and semi-conductor production
- Plant cell culture/agriculture
- Food and drink industry
- Aerospace industry







Control panel



Left hand glass with metal sheet and two service valves



UV night cover



Windscreen protection kit



Hanging bar with hooks



Ergolign saddle stool

## Specifications

Size/Internal Width	0.9m	1.2m	1.5m	1.8m	1.8m/95
Exterior dimensions WxHxD (mm)	1000 x 1170 x 810	1300 x 1170 x 810	1600 x 1170 x 810	1900 x 1170 x 810	1900 x 1475 x 1010
Interior dimensions WxHxD (mm)	920 x 645 x 585	1220 x 645 x 585	1520 x 645 x 585	1820 x 645 x 585	1820 x 950 x 785
Shipping dimensions WxHxD (mm)	1130 x 1320 x 980	1140 x 1320 x 980	1730 x 1320 x 980	2030 x 1320 x 980	2030 x 1620 x 1180
Net weight (Kg)	110	125	140	160	170
Shipping weight (Kg)	135	150	180	200	220
Light power (Lx)	>1000				
Receptacles	3				
Noise level (dBA)	<55		<60		
Energy consumption, operating set point (W)	270		550		
Normal heat output in operation (BTU/hr)	920		1840		

## Ordering information

Description	Cat. No.				
	0.9m	1.2m	1.5m	1.8m	1.8m/95
230 V, 50/60 Hz models					
Heraguard ECO Clean Bench with melamine surface	51029701	51029702	51029703	51029704	51029705
Optional stainless steel surface (order in addition to unit)	51901074	51901075	51901076	51901077	51901078
Solenoid valve for combustible G3/8 (yellow) connection	50109978				
120 V, 50/60 Hz models					
Heraguard ECO Clean Bench with melamine surface	51029696	51029697	51029698	51029699	51029700
Heraguard ECO Clean Bench with stainless steel surface	51029691	51029692	51029693	51029694	51029695
Solenoid valve for combustible G3/8 (yellow) connection	1911308				
Other options					
Windscreen protection kit	50052208	50052460	50052461	50052462	50053522
Fixed floor stand (height of 680mm)	50155665	50155666	50155667	50155668	
Castor set - Fixed stands only	50109977				-
Manual adjustable floor stand (height of 680-880mm)	50155688	50155689	50155690	50155691	
Foot rest bars	50051982	50051983	50051984	50051985	
Factory installed UV light option including night cover	51901073				
Vacuum tap G3/8 connection (grey) with long neck	50044678				
Water tap G3/8 connection (black) with long neck	50044679				
Non-combustible G3/8 connection (green) with long neck	50045959				
Combustible G3/8 connection (yellow) with long neck	50046015				
Lead through for hose connections 10-13mm inner diameter hose	50059017				
Lead through for hose connections 3mm inner diameter hose	50076408				
Left hand glass with metal sheet, 2 media valve holes & 1 SmartPort	51901071				Included
Right hand glass with metal sheet, 2 media valve holes & 1 SmartPort	51901072				Included
Hanging bar with hooks	50073943	50073944			
Ergolign cleanroom saddle stool	ERG-CR-2330				
Switzerland country configuration	51900300				
UK country configuration	51900303				
Italy country configuration	51900306				
France country configuration	51900448				
Denmark country configuration	51900481				
Australia country configuration	51900449				
China country configuration	51900900				

Uw dealer in Nederland:

 **POLYTEMP**  
SCIENTIFIC

Poly Temp Scientific  
De Marne 211  
8701 MH Bolsward  
+31 (0)515 575 105  
info@polytemp.com

 Learn more at [thermofisher.com/bsc](https://thermofisher.com/bsc)

**For Laboratory Use. It is the customer's responsibility to ensure that the performance of the product is suitable for customers' specific uses or applications.** © 2022 Thermo Fisher Scientific Inc. All rights reserved. All trademarks are the property of Thermo Fisher Scientific and its subsidiaries unless otherwise specified. **EXT3342 0722**

**thermo** scientific